

**SINGLE ACTING TELESCOPIC CYLINDERS**

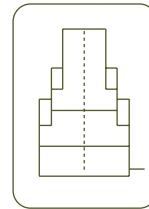


- ✓ Capacity from 10 to 30 Tn, stroke up to 600 mm.
- ✓ For applications with minimum clearance and high lift required.
- ✓ Load return.
- ✓ With tilting saddle to improve side load resistance. Flat saddle available as option for confined spaces.
- ✓ Special coating as standard to improve corrosion and side load resistance.
- ✓ Double acting steel DL, aluminium double acting DLA and aluminium single acting SLA available as special.

Capacity	Model	1 <sup>st</sup> Stage			2 <sup>nd</sup> Stage			
		LARZEP	Capacity	Stroke	Area	Capacity	Stroke	
Tn		kN	mm	cm <sup>2</sup>	kN	mm	cm <sup>2</sup>	
15	SL01427	345	135	50,3	135	270	19,6	
	SL01643	911	145	132,7	389	290	56,7	
20	SL02030	486	150	70,8	194	300	28,2	
	SL02050	1.213	170	176,7	486	340	70,8	
30	SL03130	776	150	113	303	300	44,1	
	SL03160	1.947	200	283,5	776	400	113	



TELESCOPIC CYLINDERS



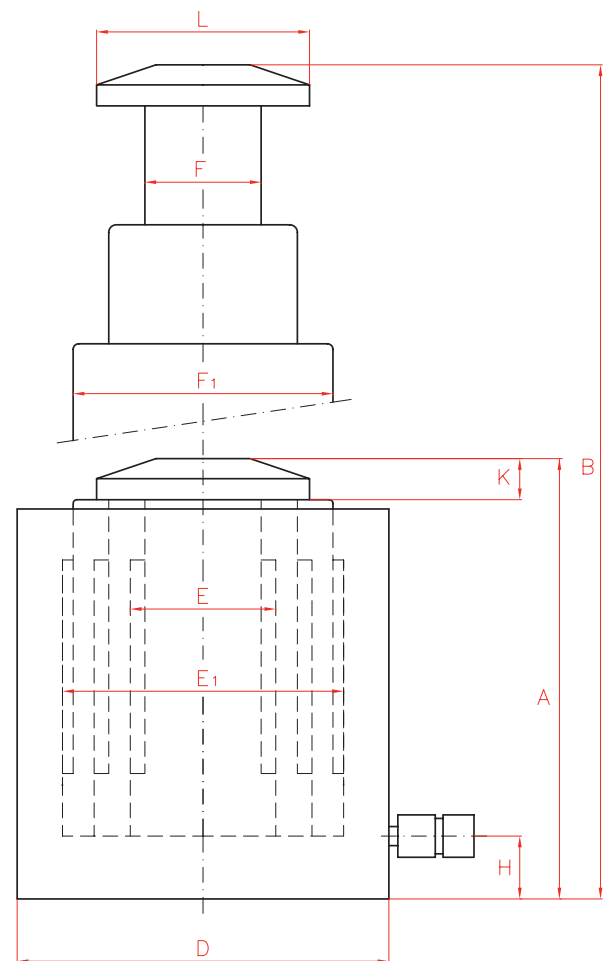
Type	<b>SL</b>
Capacity	<b>15 - 30 Tn</b>
Stroke	<b>270 - 600 mm</b>
Max. pressure	<b>700 bar</b>

SL CYLINDERS

Special Double Acting Aluminium Cylinders DLA.



Double Acting Telescopic Cylinders DL.



3 <sup>rd</sup> Stage			Model	Oil Cap.	A	B	D	E	E1	F	F1	H	K	L	Weight
Capacity	Stroke	Area	LARZEP												
kN	mm	cm <sup>2</sup>		cm <sup>3</sup>	mm	mm	mm	mm	mm	mm	mm	mm	mm	mm	kg
-	-	-	<b>SL01427</b>	944	269	539	110	50	80	40	68	20	35	45	16
163	435	23,7	<b>SL01643</b>	3.092	310	745	170	50	130	45	110	27	38	45	40
-	-	-	<b>SL02030</b>	1.487	299	599	125	50	80	60	95	23	35	45	22
194	500	28,2	<b>SL02050</b>	4.661	351	851	200	50	125	60	150	34	39	61	66
-	-	-	<b>SL03130</b>	2.359	324	644	160	60	100	75	120	25	38	61	40
303	600	44,1	<b>SL03160</b>	8.816	405	1.005	250	65	160	75	190	44	40	61	120