

Ultra High Pressure Hand Pump



- Maximum working pressure 2.800 bar.
- For use with single-acting cylinders.
- Lightweight aluminium pump.
- Two speed model.
- Hydraulic outlet port: 3/4"-16 UNF female.
- Fitted with handle clip for ease of carrying.
- 2.800 bar accessories available.

HYDRAULIC ALUMINIUM HAND PUMP



LARZEP advantages

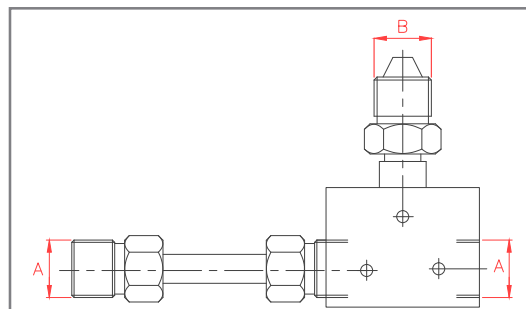
- WA series pumps are for use with single-acting cylinders.
- Lightweight aluminium pump, ideal for easy portability and handling.
- Two speed model to provide rapid cylinder advance until contact is made with the load.
- Hydraulic outlet port: 3/4"-16 UNF female.
- Fitted with handle clip for ease of carrying.
- 2.800 bar accessories available: hoses, couplers, adaptors and gauge.

3.000 BAR PRESSURE GAUGE

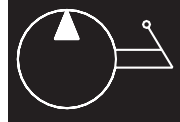
Model	Pressure	Scale	Ext. Ø	Width	Thread	Model
LARZEP	bar	bar	mm	mm	mm	LARZEP
AV43010	3.000	50	100	60	Female M16x1.5	AZ1513

3.000 BAR GAUGE ADAPTOR

Model	A	B
LARZEP	60° Cone	60° Cone
AZ1530	3/4"-16 UNF	M16x1.5



HYDRAULIC HAND PUMPS

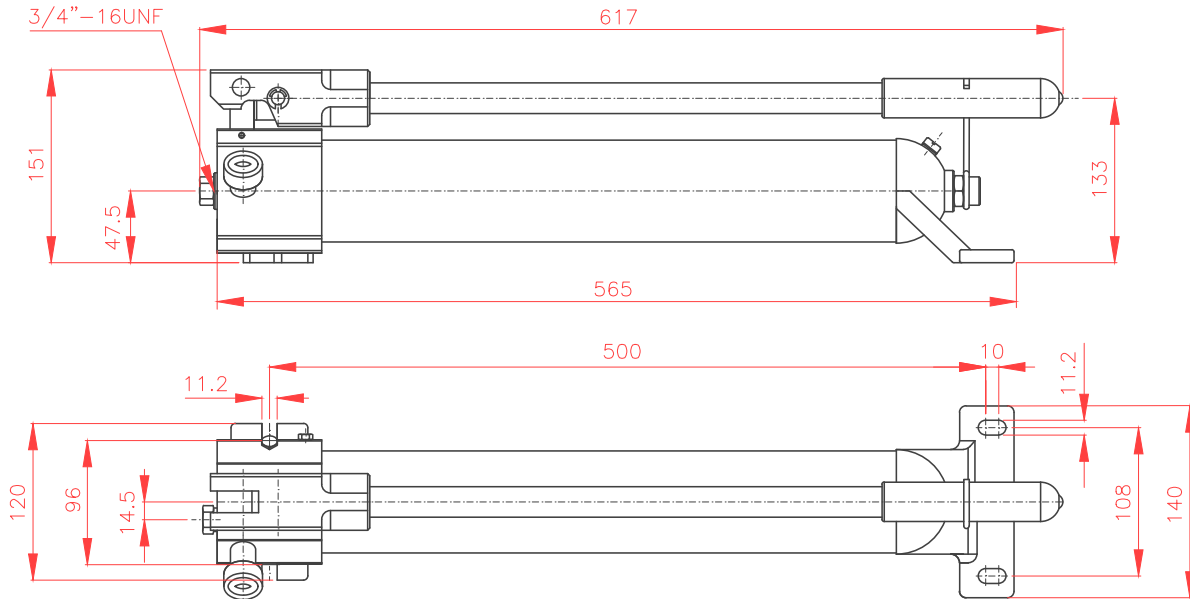


WA

1,0 litre

2.800 bar

PUMPS



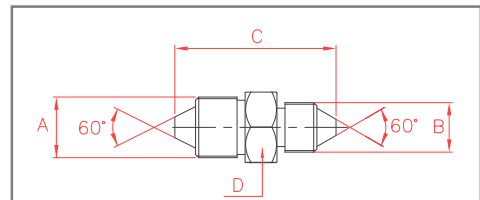
Model	Usable oil	Handel effort	Oil displacement per stroke (cm ³)		Pressure rating (bar)		Weight
			1 st Stage	2 nd Stage	1 st Stage	2 nd Stage	
LARZEP	cm ³	kg					kg
WA21028	1.000	43	12,9	0,65	14	2.800	4,5

HOSES MAXIMUM WORKING PRESSURE 3.000 BAR

Int. Ø	End	Pressure	Length (m)							
			0,8	1,5	2	3	4	6	8	10
3,9	M16x1.5	3.000	AP6008	AP6015	AP6020	AP6030	AP6040	AP6060	AP6080	AP6100

3.000 BAR ADAPTOR

Model	A	B	C	D
LARZEP	60° Cone	60° Cone	mm	mm
AZ1107	3/4"-16 UNF	M16x1.5	50	22



3.000 BAR BALL COUPLERS

Flow	Coupling	Model	Thread	Pressure
l/min		LARZEP	60° Cone	bar
4,6	Male	AZ3330	Female M16x1.5	3.000
	Female	AZ3350	Female M16x1.5	3.000

