



# CLEANROOM

Range of lifting material  
designed for white room

 **VERLINDE**  
LIFTING EQUIPMENT

# Verlinde, leader in lifting equipment in Europe and worldwide

## Top quality materials for extremis conditions

Each product bearing the VERLINDE brand is the outcome of production facilities that are constantly improved and adapted to cutting-edge design techniques.

The materials and components used for the manufacture of our products are subjected to the most stringent checks.

At its various production plants, VERLINDE mass produces wire rope, chain, belt electric winches, together with travelling crane components.

Sales agents well-acquainted with hoisting techniques analyse the problems set by each installation project (10 agencies in France and other agencies and commercial operations in over 92 countries throughout the world).

A rapid answer to your problems : our sales agents can respond immediately to any request for standard equipment, whilst for more specialised queries, our Engineering Service will respond very rapidly.

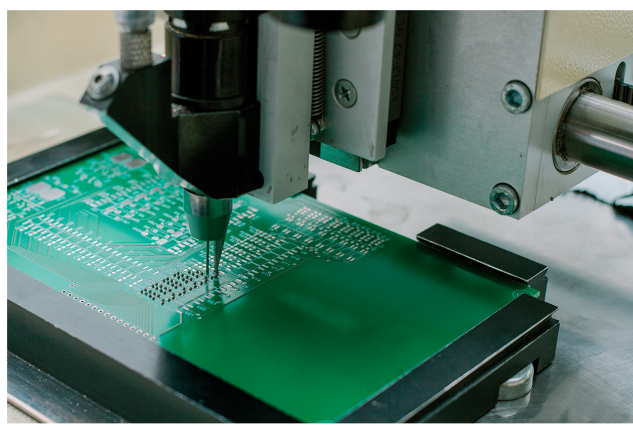
Rush, one-off deliveries : the planning schedule is a key instrument in our activity – our plants are organised to meet out-of – the-ordinary requests.



## A wide choice of lifting solutions dedicated to your need

### Electric hoists

For vertical lifting with or without horizontal motion of the load. The motorized motion is dedicated for higher loads.



### Overhead handling system

The Aluminium Eurosystem represents a new generation of hollow profile handling systems. This innovative solution presents the combined advantages of conventional steel and aluminium hollow profile.



### Jib cranes

Used in addition to lifting units (electric or manual hoist) to support horizontal or rotation motion of the load.



# EUROLIFT BH<sup>®</sup>

Electric belt hoists  
for loads of  
63 to 5,000 kg



**EUROLIFT BH<sup>®</sup>**  
Trolley version with worm gear box  
travelling machinery



**EUROLIFT BH1<sup>®</sup>**

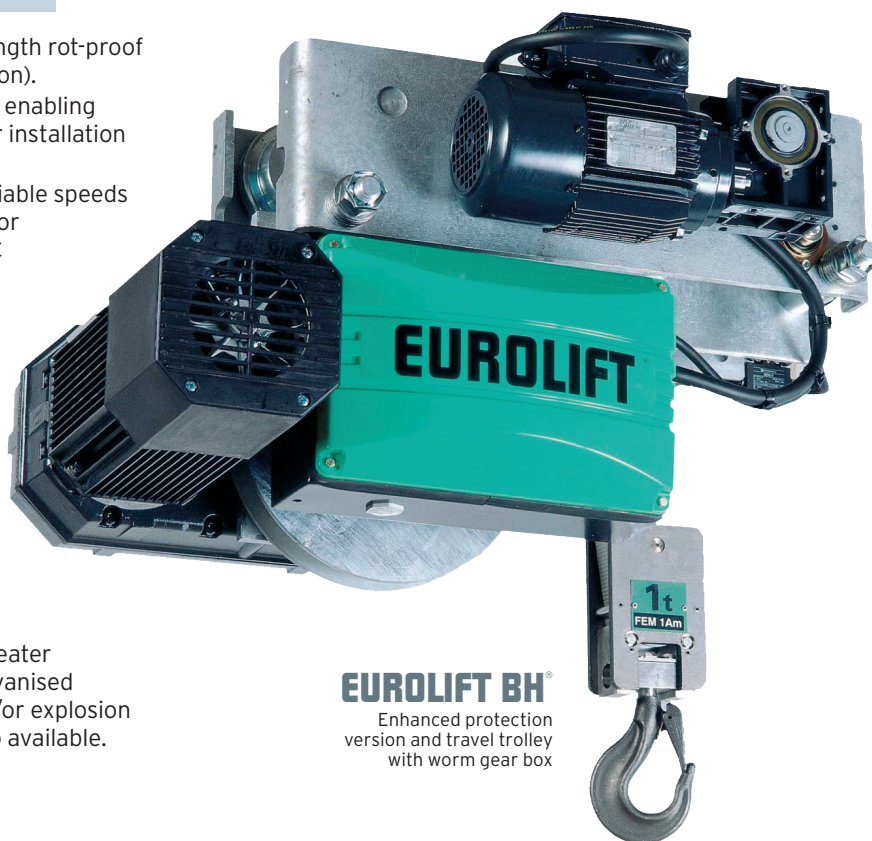


The EUROLIFT BH electric belt hoist meets your needs for hoisting power with the strictest levels of cleanliness. The EUROLIFT BH is a hoist complying with EC European standards, offering you the lifting power and robustness of a product designed for industrial duty combined with 100% clean operation to meet your most stringent requirements with regard to hygiene, handling of foodstuffs and chemical products and “white room” conditions,...

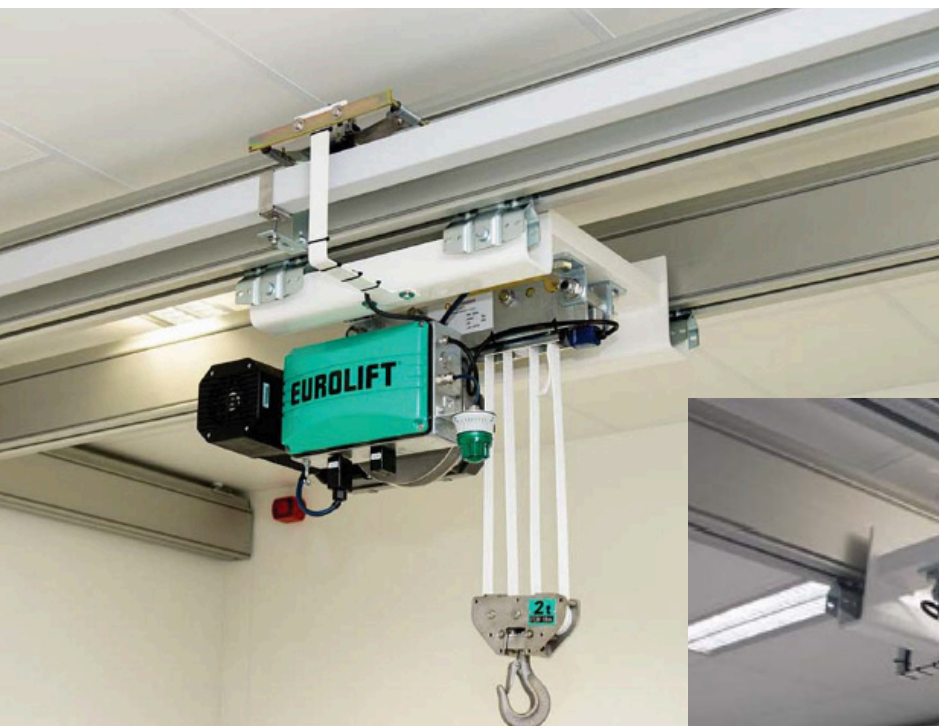


## Technical characteristics

- > Anticorrosion product with high strength rot-proof belt (Black as standard, white as option).
- > Exceptionally little loss of headroom, enabling the EUROLIFT BH to adapt to all your installation configurations.
- > Lift motor with two mechanically variable speeds and two speed travel movement motor (complying with standard EC 34.1/IEC 34.2, IP 55 protection and insulation F) combined with perfectly sealed reduction gearing enabling your loads to be shifted silently with great precision.
- > A high security belt guide, electric hoisting limit switch and electrical load limiter as standard equipment, ensuring you, as user, maximum safety in every situation.
- > Variable speed travel motor for precise positioning of loads.
- > An option of this lifting unit offers greater protection with stainless steel or galvanised elements and an EX spark proof and/or explosion proof version (ATEX standard) is also available.



**EUROLIFT BH®**  
Enhanced protection  
version and travel trolley  
with worm gear box



EUROLIFT BH Electric belt hoist on double girder trolley in an EUROSISTEM ALU profile.  
Option : stainless steel hook block, galvanized body and white belt).



# EUROCHAIN VR<sup>®</sup> INOX

Electric chain hoist  
for loads from  
63 to 10,000 kg



## Technical characteristics

- > Stainless steel lifting chain.
- > New lifting nut concept with intermediate teeth for perfect chain drive.
- > Torque limiter.
- > Disk lifting brake.
- > 3 m standard lifting height.
- > Dual-speed lifting.
- > Safety electric end of run for up and down position.
- > IP55 lifting and travelling motor.
- > Thermal protection on lifting motor.
- > Tropic-proof protection (lifting and steering - 90 to 95 %).
- > Disconnectable command cable.
- > 2-buttons unit on fixed hoist or push steering carriage.
- > 4-buttons unit on hoist coupled to electric steering carriage.
- > Emergency stop button.
- > 400V/3Ph/50Hz or 415V/3Ph/50 Hz or 460V/3 Ph/60 Hz power supply.



## Options

- > Stainless steel lifting hook.
- > Biodegradable oil NSF H1 or dedicated for food (lifting and travelling gearbox, lifting chain). Lubricant clean and bubble for chains, sprockets and guides in the industry food. Oil synthetic anti-wear and extreme pressure, usable for incidental contact with the food stuffs following the FDA requirements (certificates available on request).
- > Stainless steel load wheel on trolley hoist and accessory white finish paint.
- > Level of protection increased : ATEX Zone 1, EEx.
- > Level of protection increased : ATEX Zone 22.
- > IP66 protection.
- > Variable speed lifting.
- > Extreme operating temperatures : (-40 °C to +70 °C).
- > Wall control panel instead of the pendant.
- > Remote radio control.
- > Manual or electric trolley.







# EUROSYSTEM® *ALU*

Aluminium hollow profile overhead handling system for loads from 60 to 2,000 kg

➤ **Suspended or embedded single girder travelling crane.**  
Load capacity up to 2,000 kg.  
Can be embedded to optimise lifting height.



## ➤ Advantages of aluminium

- **ERGONOMIC.** The lightness of the rails provides easy, effortless manipulation by the user even with heavy and unwieldy loads.
- **PRECISE.** Precision is ensured by top quality manufacturing and smooth manoeuvring.
- **ANTI -CORROSIVE TREATMENT.** The profile aluminium is anodized outside and inside.
- **ECONOMICAL.** By the reduced volume and simplification of the bearing structures, by the rapidity of assembly.
- **NEW TECHNOLOGY.** The profile was made possible by the latest cold extrusion engineering innovations and optimisation of structures.
- **PRACTICAL.** The profile is compatible with all ITEM standardised accessories.
- **LONG LIFE SPAN.** The remarkable resistance to wear is due to the anodizing treatment and to the roller material.
- **SAFETY.** The profile is guaranteed weldless.
- **NOISELESS.** The very low noise level of operation is due to the great smoothness of the rolling surface.

The Aluminium Eurosystem represents a new generation of hollow profile handling systems. This innovative solution presents the combined advantages of conventional steel and aluminium hollow profile.

## ➤ Technical characteristics

A graded range of 4 sizes of profile.  
As for steel sections, the selection of the model will depend on the load capacity and the distance between the suspension points.

- AL06, 6.5 kg/m, up to 320 kg.
- AL08, 8 kg/m, up to 500 kg.
- AL06, 10.6 kg/m, up to 2,000 kg.
- AL06, 14.5 kg/m, up to 2,000 kg.

➤ **Suspended or embedded double girder travelling crane.**  
Load capacity up to 2,000 kg.  
For large spans and highest loads.  
3-dimensional surface coating.  
Limited overall height.



# EUROSTYLE®

Range of manual and motorized jib cranes



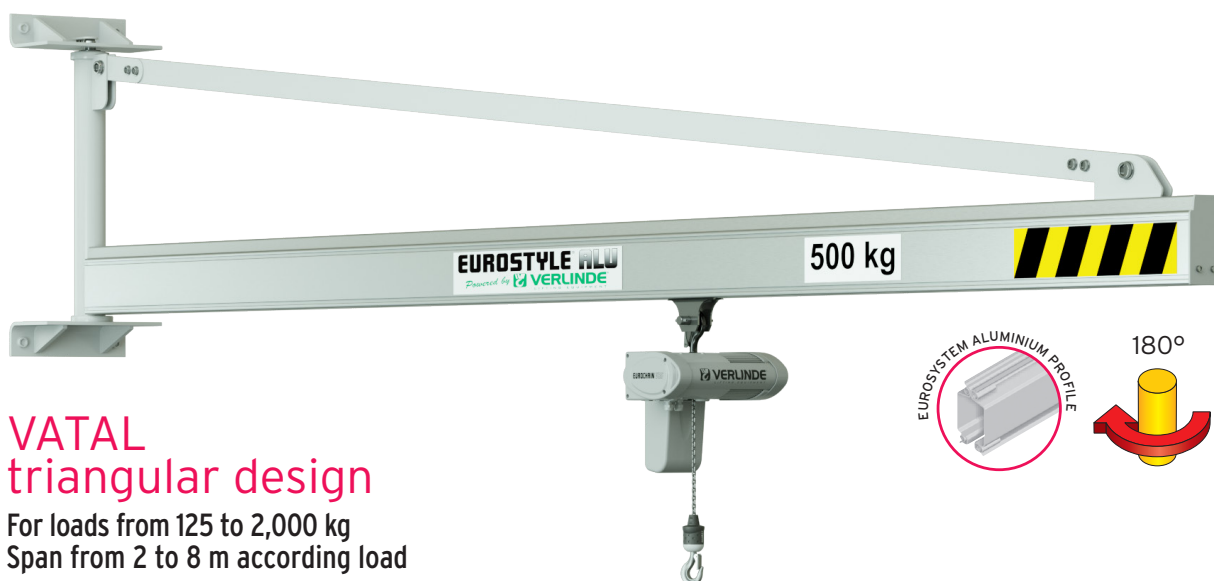
## VGPA gantry crane

For loads from 500 to 2,000 kg



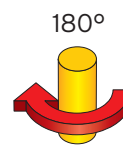
### Technical characteristics

- > The raceway of these VERLINDE workshop gantries consists of a EUROSYSTEM hollow profile in steel or aluminium (depending on model).
- > The gantry is delivered with a manual hoist-bearing EUROSYSTEM type trolley.
- > These workshop gantries are mounted on caster wheels in white polyamide.
- > The gantry cannot be shifted under load.
- > On the aluminium gantry version :  
Legs can be folded for handling.  
Lift height and span can be adjusted by an operator alone.



## VATAL triangular design

For loads from 125 to 2,000 kg  
Span from 2 to 8 m according load





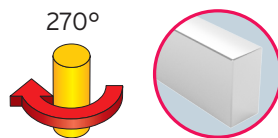
## VFTAL triangular design

For loads from 63 to 2,000 kg  
Span from 2 to 8 m according load  
Height under eye : 2,5 m



## Templier TC Premium

For loads from 50 to 1,000 kg  
Span from 2 to 5 m according load  
Height under eye : 3 m



## VERLINDE is:

- The leading French manufacturer and exporter of lifting and handling equipment.
- A comprehensive range of 30 groups of lifting equipment from 60 to 250,000 kg.
- ISO 9001 Quality control certified and ISO 14001 Environmental Management Systems.



## Our references

**Metallurgy, Mechanics, Nuclear** ➤ ArcelorMittal - Unimetal - Stein - NFM - Framatome - Alstom

**Chemicals, Petrochemicals industry** ➤ Sanofi Aventis - Du Pont De Nemours - Total

**Aeronautical industry** ➤ Aérospatiale - Airbus - Eurocopter - Air France - Aéroport de Paris - Snecma - Dassault Aviation

**Agri-food industry** ➤ Nestlé - Danone - Bel - Palamatic - Tetrapak - Lactalis

**Automobile industry** ➤ Renault - Peugeot - Citroën - Scania - Ford - RVI - Volkswagen - Michelin - Massey Ferguson - Manitou - Toyota Industrial Equipment

**Other sectors** ➤ EDF - SNCF - RATP - Spie - Degremont - Eiffage - Polysius - Baudin Chateaufort



### In France:

A sales network and after sales service points, EUROPONT travelling crane construction plants and a distributor network.

### Abroad:

A customer service in more than 92 countries.



2, boulevard de l'Industrie - B.P. 20059 - 28509 Vernouillet cedex - France  
Telephone : (33) 02 37 38 95 95 - Fax : (33) 02 37 38 95 99  
Internet : [www.verlinde.com](http://www.verlinde.com)